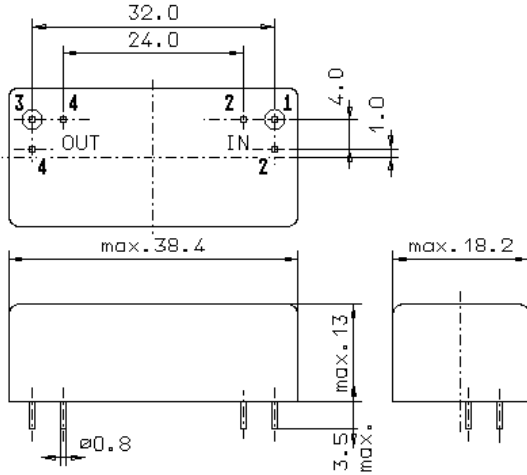


Specification for crystal filter:

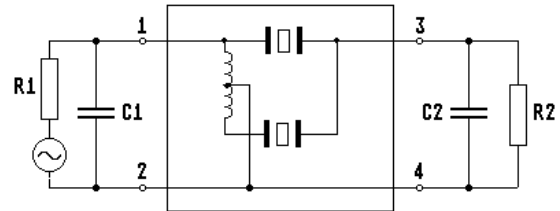
**QF 45.0-20000/07**

**1. General**

1.1. Package:



GM17



- 1.2. Type name: QF 45.0-20000/07
- 1.3. Number of poles: 6
- 1.4. Operating temperature range: -20°C to +70°C
- 1.5. Storage temperature range: -35°C to +85°C

**2. Electric values**

- 2.1. Nominal centre frequency  $f_0$ : 45.0 MHz

**2.2. Pass band**

- 2.2.1. Bandwidth between 3 dB - frequencies:  $\geq f_0 \pm 100$  kHz
- 2.2.2. Ripple:  $\leq 2.0$  dB at  $f_0 \pm 75$  kHz
- 2.2.3. Differential group delay :  $\leq 5.0$   $\mu$ s at  $f_0 \pm 75$  kHz
- 2.2.4. Insertion loss:  $\leq 4.0$  dB  
( measured on smallest attenuation in pass band )

**2.3. Stop band**

- 2.3.1.  $f_0 \pm 190$  kHz  $\geq 20$  dB
- 2.3.2.  $f_0 - 900$  kHz  $\geq 70$  dB
- 2.3.3.  $f_0 \pm 1.7$  MHz  $\geq 80$  dB
- 2.3.4. Spurious responses at  $f_0 + 190$  kHz...+2.5 MHz:  $\geq 30$  dB

- 2.4. Terminating impedance ( input and output ):  $50 \Omega // 0$  pF
- 2.5. Input power level ( working/without destruction ): +1dBm / +15 dBm

- 3. Marking on the package: manufacturer, date code  
QF 45.0-20000/07

- 4. Environment conditions: Corresponding to Telefilter CF001

Edited by: \_\_\_\_\_ date: \_\_\_\_\_ name: \_\_\_\_\_