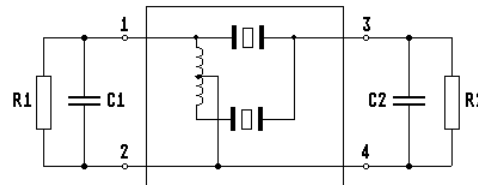
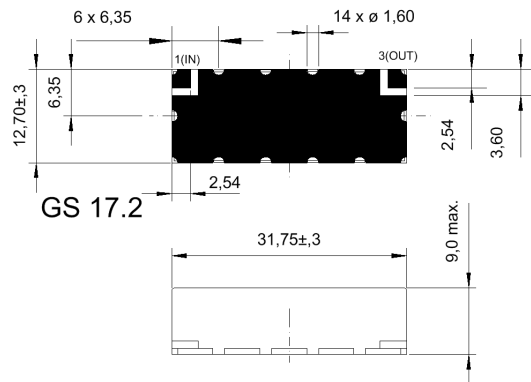


Specification for crystal filter:

QF 42.8-3000/01

1. General

1.1. Case:



- | | |
|-----------------------------------|-----------------|
| 1.2. Type name: | QF 42.8-3000/01 |
| 1.3. Number of poles: | 2 |
| 1.4. Operating temperature range: | -20°C to +70°C |
| 1.5. Storage temperature range: | -45°C to +85°C |

2. Electric values

- | | |
|---|------------------------------------|
| 2.1. Nominal centre frequency fo: | 42.8 MHz |
| 2.2. Pass band | |
| 2.2.1. Bandwidth between 3 dB - frequencies: | > fo ± 15.0 kHz |
| 2.2.2. Ripple: | < 1.0 dB at fo ± 11.0 kHz |
| 2.2.3. Insertion loss:
(measured on smallest attenuation in pass band) | < 3.5 dB |
| 2.3. Stop band | |
| 2.3.1. fo ± 200 kHz | > 40 dB |
| 2.3.2. Alternate attenuation: | > 35 dB (except spurious) |
| 2.4. Terminating impedance (input and output): | 50 Ω // 0 pF |
| 2.5. Input power level for reference measurement: | +15 dBm |
| 2.5.1. Maximum input power level without destruction: | +25 dBm |
| 3. Marking on the case: | firm, year week
QF 42.8-3000/01 |
| 4. Environment conditions: | Corresponding to Telefilter CF001 |

Edited by: _____ date: _____

Name: _____