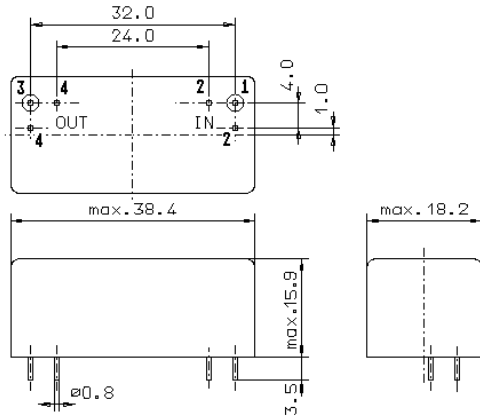


Specification for crystal filter:

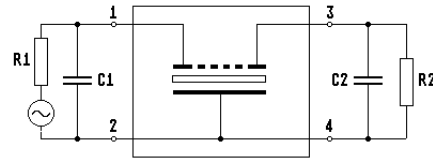
QF 10.7-20000/04

1. General

1.1. Case:



GM 1



- | | |
|-----------------------------------|------------------|
| 1.2. Type name: | QF 10.7-20000/04 |
| 1.3. Number of poles: | 4 |
| 1.4. Operating temperature range: | -40°C to +85°C |
| 1.5. Storage temperature range: | -45°C to +85°C |

2. Electric values

- | | |
|---|-----------------------------------|
| 2.1. Nominal centre frequency f_0 : | 10.7 MHz |
| 2.2. Pass band | |
| 2.2.1. Bandwidth between 3 dB - frequencies: | $\geq f_0 \pm 100$ kHz |
| 2.2.2. Ripple: | ≤ 2.0 dB at $f_0 \pm 75$ kHz |
| 2.2.3. Insertion loss:
(measured on smallest attenuation in pass band) | ≤ 10.0 dB |
| 2.2.4. Maximum input level (working/non-damaged) | +10 / +20 dBm |
| 2.3. Stop band | |
| 2.3.1. $f_0 \pm 350$ kHz | ≥ 40 dB |
| 2.3.2. Alternate attenuation | ≥ 60 dB except spurious |
| 2.4. Terminating impedance (input and output): | $50 \Omega // 0$ pF |
| 3. Marking on the case: | firm, year week
10.7-20000/04 |
| 4. Environment conditions: | Corresponding to Telefilter CF001 |

Edited by: _____ date: _____ name: _____