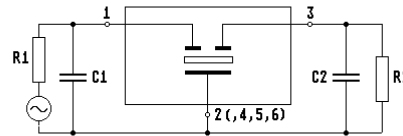
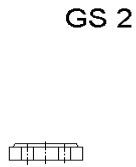
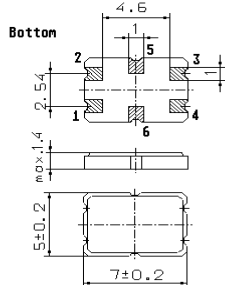


Specification for monolithic crystal filter:

MQF 92.16-0600/01

1. General

1.1. Case:



- 1.2. Type name: MQF 92.16-0600/01
- 1.3. Number of poles: 2
- 1.4. Operating temperature range: -25°C to +80°C
- 1.5. Storage temperature range: -55°C to +125°C

2. Electric values

- 2.1. Nominal centre frequency fo: 92.16 MHz
- 2.2. **Pass band**
 - 2.2.1. Bandwidth between 3 dB - frequencies: > ± 3 kHz
 - 2.2.2. Ripple: < 1.0 dB at fo ± 1.5 kHz
 - 2.2.3. Insertion loss: < 3.0 dB
(measured on smallest attenuation in pass band)
- 2.3. **Stop band**
 - 2.3.1. fo ± 30 kHz: > 30 dB
 - 2.3.2. Alternate attenuation: > 30 dB (expect spurious)
- 2.4. Terminating impedance (input and output): 2000 Ω // 0.4 pF
- 2.5.1 Nominal input power level: -10 dBm
- 2.5.2 Maximum input power level: + 5 dBm
- 3. Marking on the case: M92A1
tft yyww
- 4. Environment conditions: according to Telefilter CF001
- 5. ESD class: JESD A 114B for HBM class 1C
- 6. Humidity class: MSL 1

Edited by: _____ date: _____ name: _____