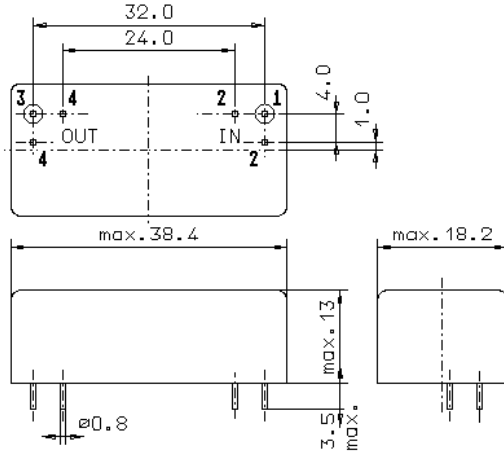


Specification for monolithic crystal filter:

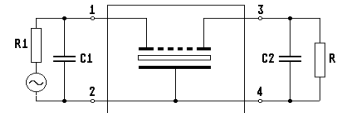
**MQF 74.969-1300/03**

**1. General**

1.1. Case: filters have to be lead-free and RoHS conform



GM17



- 1.2. Type name: MQF 74.969-1300/03
- 1.3. Number of poles: 6, 3<sup>rd</sup> overtone
- 1.4. Operating temperature range: -20°C to +70°C
- 1.5. Storage temperature range: -45°C to +85°C

**2. Electric values**

2.1. Nominal centre frequency fo: 74.96875 MHz

**2.2. Pass band**

- 2.2.1. Bandwidth between 3 dB - frequencies: > ± 6.5 kHz
- 2.2.2. Ripple: < 2.0 dB at fo ± 4.0 kHz
- 2.2.3. Insertion loss: < 6.0 dB  
( measured on smallest attenuation in pass band )

**2.3. Stop band**

- 2.3.1. fo ± 25 kHz > 60 dB
- 2.3.2. fo ± 60 kHz > 80 dB
- 2.3.3. Alternate attenuation: > 80 dB ( except spurious )
- 2.3.4. Spurious responses: > 30 dB

2.4. Terminating impedance ( input and output ): 50 Ω // 0 pF

3. Marking on the case: firm, year week  
MQF 74.969-1300/03

4. Environment conditions: according to Telefilter CF001

Edited by: \_\_\_\_\_ date: \_\_\_\_\_ name: \_\_\_\_\_