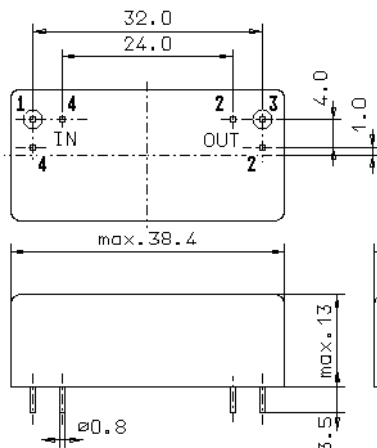


Specification for monolithic crystal filter

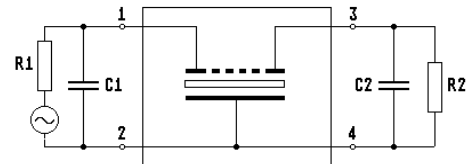
MQF 74.7-1000/02V0

1. General

1.1. Package



GM17.1



- | | |
|-----------------------------------|--------------------|
| 1.2. Type name: | MQF 74.7-1000/02V0 |
| 1.3. Number of poles: | 4 |
| 1.4. Operable temperature range: | -20°C to +70°C |
| 1.5. Operating temperature range: | -10°C to +60°C |
| 1.6. Storage temperature range: | -55°C to +105°C |

2. Electric values

- | | |
|---|---|
| 2.1. Nominal centre frequency fo: | 74.7 MHz |
| 2.2. Pass band | |
| 2.2.1. Centre frequency fm: | 74.7 MHz \pm 1 kHz |
| 2.2.2. Bandwidth between 6 dB - frequencies: | \geq 9.5 kHz and \leq 10.5 kHz |
| 2.2.3. Group delay distortion:
(within 3-dB passband bandwidth) | \leq 10.0 μ s |
| 2.2.4. Insertion loss:
(measured on smallest attenuation in pass band) | \leq 6.0 dB |
| 2.3. Stop band | |
| 2.3.1. fm \pm 35 kHz | \geq 60 dB |
| 2.3.2. fm + 35 kHz.....+ 150 kHz | \geq 60 dB |
| 2.3.3. fm + 150 kHz.....+ 1000 kHz | \geq 70 dB |
| 2.3.4. fm - 155 kHz.....- 165 kHz | \geq 75 dB |
| 2.3.5. Spurious responses | |
| within fm \pm 35 kHz | no responses |
| fm + 35 kHz.....+ 100 kHz | \geq 50 dB |
| fm +100 kHz.....+ 150 kHz | \geq 30 dB |
| fm +150 kHz.....+ 500 kHz | \geq 40 dB |
| fm +500 kHz.....+ 700 kHz | \geq 60 dB |
| 2.4. Terminating impedance (input and output): | 50 Ω \pm 10 % // 0 pF |
| 2.5. Intermodulation | |
| frequencies: | fo \pm 100 kHz / fo \pm 200 kHz |
| input power level: | -10 dBm |
| IM: | > 90 dB |
| 3. Marking: | manufacturer, date code
MQF 74.7-1000/02V0 |
| 4. Environment conditions: | Corresponding to Telefilter CF001 |