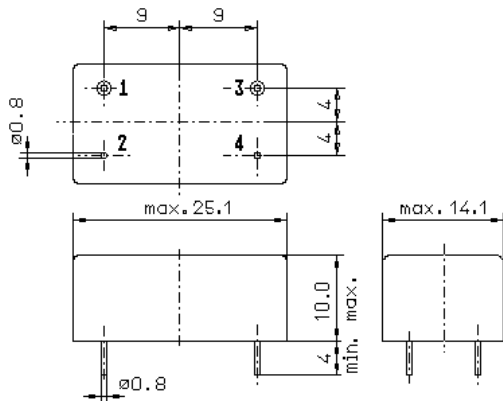


Specification for monolithic crystal filter:

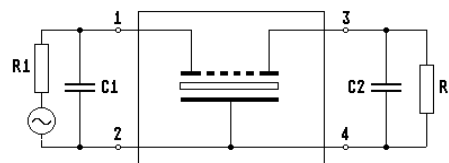
**MQF 45.818-0600/02**

**1. General**

1.1. Case:



GM3



- |                                   |                    |
|-----------------------------------|--------------------|
| 1.2. Type name:                   | MQF 45.818-0600/02 |
| 1.3. Number of poles:             | 4                  |
| 1.4. Operating temperature range: | -20°C to +70°C     |
| 1.5. Storage temperature range:   | -55°C to +85°C     |

**2. Electric values**

- |   |   |
|---|---|
| 2.1. Nominal centre frequency fo:   | 45.818 MHz                                    |
| 2.2. <b>Pass band</b>   |   |
| 2.2.1. Bandwidth between 3 dB - frequencies:                                | > fo ± 3.0 kHz                                |
| 2.2.2. Ripple:  | < 1.0 dB at fo ± 2.0 kHz                      |
| 2.2.3. Insertion loss:<br>( measured on smallest attenuation in pass band ) | < 4.5 dB                                      |
| 2.3. <b>Stop band</b>   |   |
| 2.3.1. fo ± 15 kHz  | > 40 dB                                       |
| 2.3.3. Alternate Attenuation fo ± 1.0 MHz                                   | > 60 dB (except spurious)                     |
| 2.4.1. Nomial input power level   | 0 dBm   |
| 2.4.2. Maximal input power level  | +20 dBm                                       |
| 2.5. Terminating impedance R//C ( input and output ):                       | 50 Ω // 0 pF                                  |
| 3. Marking on the case:   | manufacturer, date code<br>MQF 45.818-0600/02 |
| 4. Environment conditions:  | Corresponding to Telefilter CF001             |

Edited by: \_\_\_\_\_ date: \_\_\_\_\_ name: \_\_\_\_\_