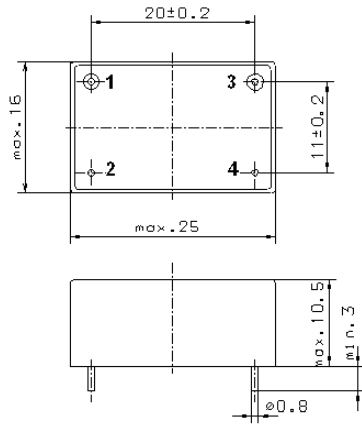


Specification for monolithic crystal filter

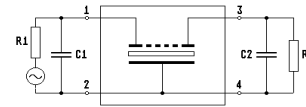
MQF 42.4375-3600/04

1. General

1.1. Case:



GM47.1



- | | |
|-----------------------------------|---------------------|
| 1.2. Type name: | MQF 42.4375-3600/04 |
| 1.3. Number of poles: | 8, fundamental mode |
| 1.4. Operating temperature range: | -40°C to +85°C |
| 1.5. Operable temperature range: | -55°C to +105°C |
| 1.6. Storage temperature range: | -55°C to +125°C |

2. Electric values

2.1. Nominal centre frequency fo: 42.4375 MHz

2.2. Pass band

- | | |
|---|---|
| 2.2.1. Bandwidth between 3 dB - frequencies: | $\geq f_o \pm 18$ kHz |
| 2.2.2. Ripple: | ≤ 1.0 dB at $f_o \pm 12.5$ kHz |
| 2.2.3. Group delay distortion: | ≤ 50 μ s at $f_o \pm 12.5$ kHz |
| 2.2.4. Insertion loss:
(measured on smallest attenuation in pass band) | ≤ 3.0 dB |

2.3. Stop band

- | | |
|--|----------------------------------|
| 2.3.1. $f_o \pm 30$ kHz | ≥ 30 dB |
| 2.3.2. $f_o \pm 50$ kHz | ≥ 60 dB |
| 2.3.3. $f_o \pm 0.1$ MHz.....10 MHz | ≥ 80 dB (except spurious) |
| 2.3.4. Spurious responses at $f_o +150$ kHz.....+250 kHz | ≥ 60 dB |

2.4. Terminating impedance (input and output): 50 Ω // 0 pF

3. Marking on the case: Manufacturer, date code
MQF 42.4375-3600/04

4. Environment conditions: Corresponding to Telefilter CF010

Edited by: _____ date: _____ Name: _____