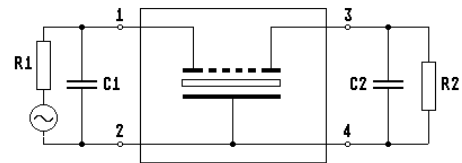
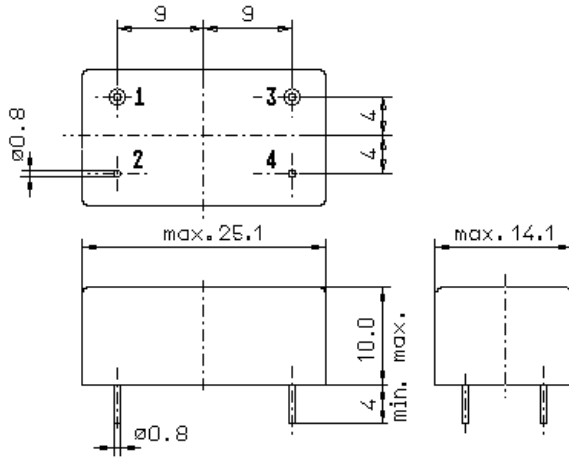


Specification for monolithic crystal filter:

**MQF 40.7-5000/02**

**1. General**

1.1. Package:



- 1.2. Type name: MQF 40.7-5000/02
- 1.3. Number of poles: 4, fundamental mode
- 1.4. Operating temperature range: -20°C to +70°C
- 1.5. Storage temperature range: -45°C to +85°C

**2. Electric values**

- 2.1. Nominal centre frequency fo: 40.7 MHz
- 2.2. **Pass band**
  - 2.2.1. Centre frequency fc: 40.7 MHz ± 1.5 kHz
  - 2.2.2. Bandwidth between 3 dB - frequencies: > fo ± 25 kHz
  - 2.2.3. Ripple: < 1.0 dB peak to peak
  - 2.2.4. Insertion loss: < 3.0 dB  
( measured on smallest attenuation in pass band )
- 2.3. **Stop band**
  - 2.3.1. fo ± 190 kHz > 60 dB ( except spurious )
  - 2.3.2. Alternate attenuation > 80 dB ( except spurious )
- 2.4. Maximum input power level: 0 / +15 ( working / non-damaged )
- 2.5. Terminating impedance R//C ( input and output ): 50 Ω // 0 pF
- 2.6. Inband Intermodulation IP3 ( with test tones frequency at fo±1 kHz and input power of 0 dBm > +33 dBm ( > 66 dB down referred to the two 0 dBm test tones at filter input )
- 3. Marking: manufacturer, date code  
MQF 40.7-5000/02
- 4. Environment conditions: Corresponding to Telefilter CF001

Edited by: \_\_\_\_\_ date: \_\_\_\_\_ name: \_\_\_\_\_