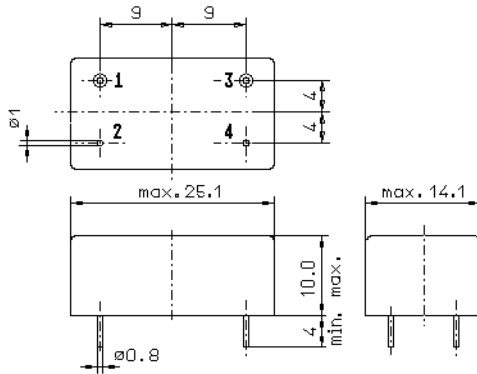


Specification for monolithic crystal filter:

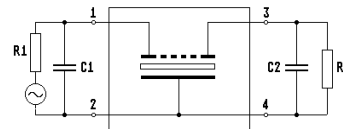
MQF 21.1429-5000/03

1. General

1.1. Case:



GM3



- | | |
|-----------------------------------|---------------------|
| 1.2. Type name: | MQF 21.1429-5000/03 |
| 1.3. Number of poles: | 6 |
| 1.4. Operating temperature range: | -40°C to +85°C |
| 1.5. Storage temperature range: | -45°C to +85°C |

2. Electric values

- | | |
|---|--|
| 2.1. Nominal centre frequency f_0 : | 21.1429 MHz |
| 2.2. Pass band | |
| 2.2.1. Bandwidth between 6 dB - frequencies: | $> f_0 \pm 25$ kHz |
| 2.2.2. Ripple: | < 2.0 dB at $f_0 \pm 20.0$ kHz |
| 2.2.3. Insertion loss:
(measured on smallest attenuation in pass band) | < 3.0 dB |
| 2.3. Stop band | |
| 2.3.1. $f_0 \pm 70$ kHz | > 60 dB |
| 2.3.2. alternate attenuation | > 60 dB (except spurious) |
| 2.4. Terminating impedance R/C (input and output): | $50 \Omega // 0$ pF |
| 3. Marking on the case: | manufacturer, date code
MQF 21.1429-5000/03 |
| 4. Environment conditions: | Corresponding to Telefilter CF001 |

Edited by: _____ date: _____ name: _____