

Monolithic crystal filter

MQF10.7-3000/13



Application

- 2 pol filter
- i.f.- filter
- use in mobile and stationary transceivers

Limiting values

		Unit	Value
Nominal frequency	f_0	MHz	10.7
Insertion loss		dB	< 1.5
Pass band at 3.0dB		kHz	$\pm > 15$
Ripple in pass band	$f_0 \pm 10$ kHz	dB	< 1.0
Stop band attenuation	$f_0 \pm 75$ kHz	dB	> 25
	$f_0 \pm 200$ kHz	dB	> 40
Alternate attenuation	$f_0 \pm 200...500$ kHz	dB	> 40
Spurious responses		dB	> 4

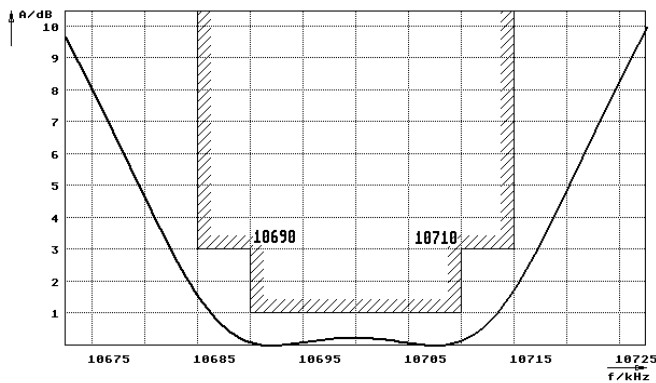
Terminating impedance Z

R1 C1	Ohm/pF	5000 -0.50
R2 C2	Ohm/pF	5000 -0.50

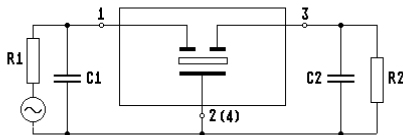
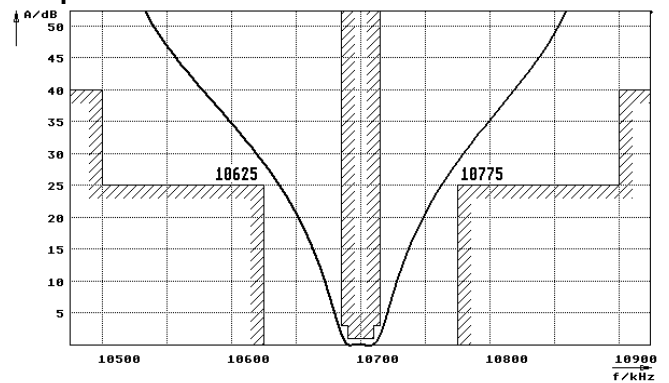
Operating temp. range	°C	-20... +70
Storage temp. range	°C	-45... +85
Environment conditions		according to CF001

Characteristics MQF10.7-3000/13

Pass band



Stop band



- Pin connections:
- 1 Input
 - 2 Ground-Input
 - 3 Output
 - 4 Ground-Output

