

Monolithic crystal filter

MQF10.7-1500/26



Application

- 6 pol filter
- i.f.- filter
- use in mobile and stationary transceivers

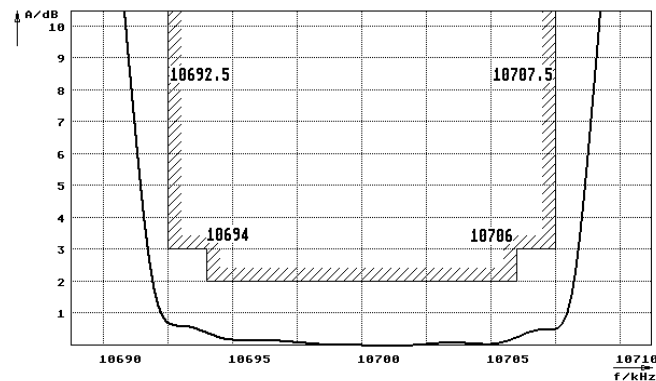
Limiting values		Unit	Value
Nominal frequency	f_0	MHz	10.7
Insertion loss		dB	< 3.0
Pass band at 3.0dB		kHz	$\pm > 7.5$
Ripple in pass band	$f_0 \pm 6 \text{ kHz}$	dB	< 2.0
Stop band attenuation	$f_0 \pm 25 \text{ kHz}$	dB	> 65
	$f_0 \pm 35 \text{ kHz}$	dB	> 80
Alternate attenuation	$f_0 \pm 35 \text{ kHz} \dots 5 \text{ MHz}$	dB	> 80 except spurious

Terminating impedance Z			
R1 C1		Ohm/pF	910 25
R2 C2		Ohm/pF	910 25

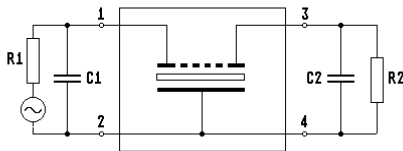
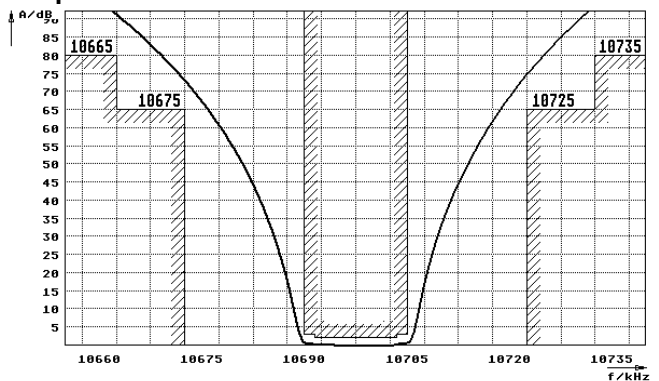
Operating temp. range	°C	-20... +70
Storage temp. range	°C	-45... +85
Environment conditions		according to CF001

Characteristics MQF10.7-1500/26

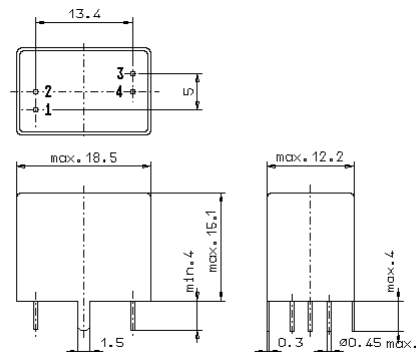
Pass band



Stop band



- Pin connections:
- 1 Input
 - 2 Ground-Input
 - 3 Output
 - 4 Ground-Output



GV5.1